

# CERTIFICATE OF LOCATION OF GOVERNMENT CORNER

**South Quarter Corner of Section 16, Township 107 North, Range 41 West, 5th P.M., State of Minnesota, County of Murray**

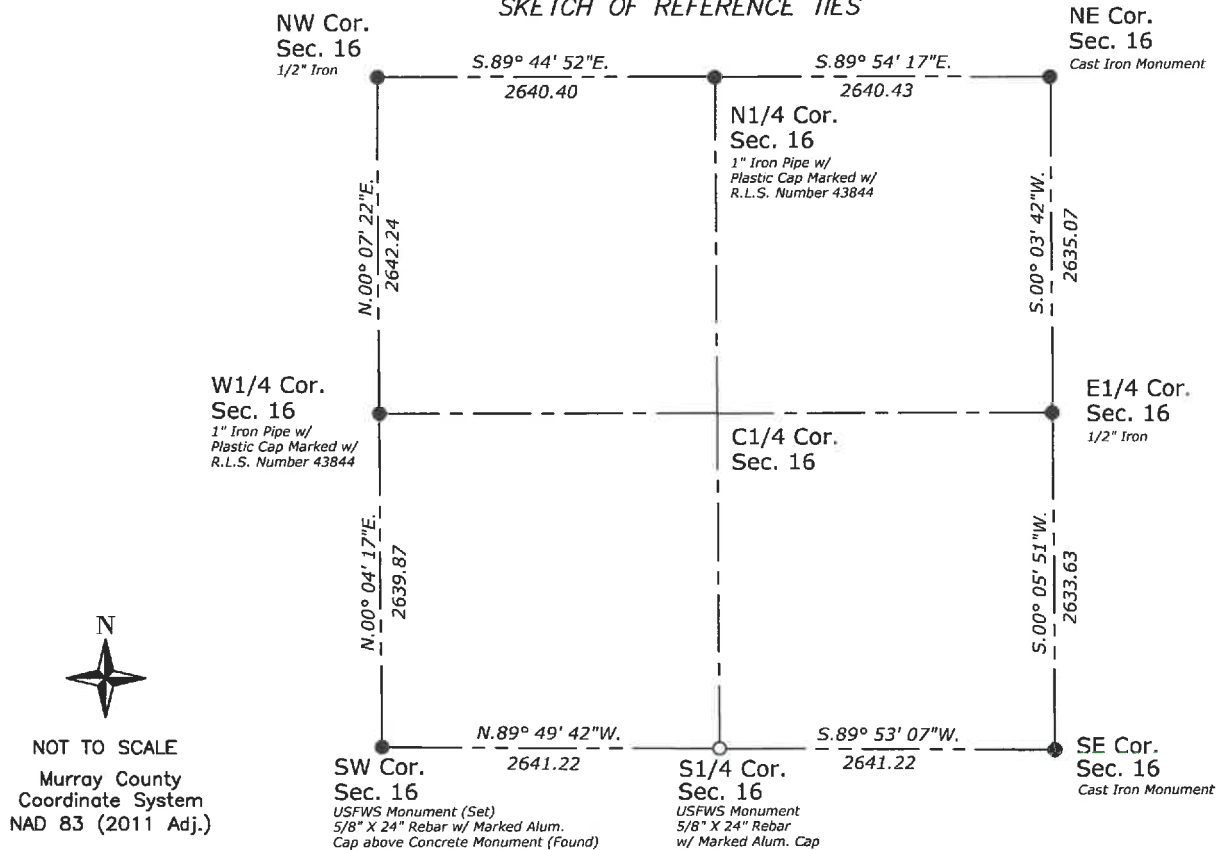
At the corner location shown on the sketch :

☒ On August 5, 2021 , found a Nothing

☐ left monument as found ☐ lowered monument ☐ removed monument (explain)

☒ On August 5, 2021 , placed a 5/8" X 24" Rebar with marked aluminum cap.

## SKETCH OF REFERENCE TIES



I hereby certify that this survey, plan or report was prepared by me or under my direct supervision and that I am a duly Licensed Land Surveyor under the laws of the State of Minnesota.

Jerry G. Johnson  
Licensed Land Surveyor  
Minn. License No. 50343

10/4/2021  
Date

Employer US Fish and Wildlife Service

OCT 15 2021

Karen Brown  
Murray County Recorder

MURRAY COUNTY COORDINATE SYSTEM  
NAD 83 (2011 Adj.)

Northing: 179319.51

Easting: 498203.69

(reserved for recording data)

Statement of evidence relative to this corner location is on back page

**Statement of Evidence**

**South Quarter Corner of Section 16, Township 107 North, Range 41 West, Murray County, Minnesota.**

1861 L. G. M. Fletcher set charred stake and built mound with trench pits per instruction.

2021 USFWS found nothing at the corner. I set a USFWS monument, 5/8" x 24" rebar with marked aluminum cap, equal distances from the southwest and southeast corners of Section 16-107-41 and in line with the fences to the east and west. It is 0.3 above the surface and in line with the fences to the north, south, east, and west.

Survey on file in the Office of the Regional Director (612-713-5410), Bloomington, MN, U.S. Fish & Wildlife Service, designated "Gary R. Johnson Tract" (30).